



Douglas Point

Historical Plaque Unveiling Ceremony

2 PM, WEDNESDAY, SEPT. 27, 2006

at the Bruce Power Visitors Centre
(4 km north of Tiverton, Ont. on Concession 4 off Hwy. 21)

Commemorating the many achievements of Canada's first large-scale power reactor and CANDU prototype, and the dedicated people behind its design, construction, commissioning and operation.

Douglas Point achieved first-criticality 40 years ago, on Nov. 15, 1966, heralding the dawn of Canada's commercial nuclear industry. Designed and owned by AECL, Douglas Point was operated by Ontario Hydro until 1984.

**With greetings from industry and government
representatives, and an official historical address**

All invited - Refreshments to follow

Sponsored by:

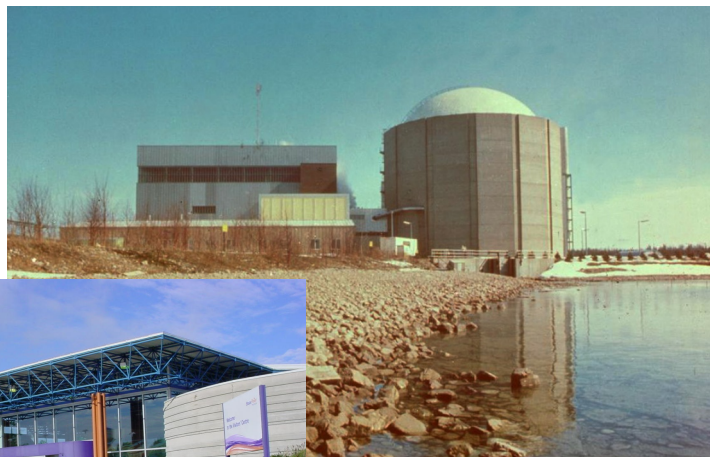


An agency of the Government of Ontario



Information:

Dr. Jeremy Whitlock, AECL
(613) 584-8811 ext.4265
whitlockj@aecl.ca



Douglas Pt. (photo: AECL)



Bruce Power Visitors Centre (photo: Bruce Power)

